

80°0'W

79°30'W

79°0'W

78°30'W

78°0'W

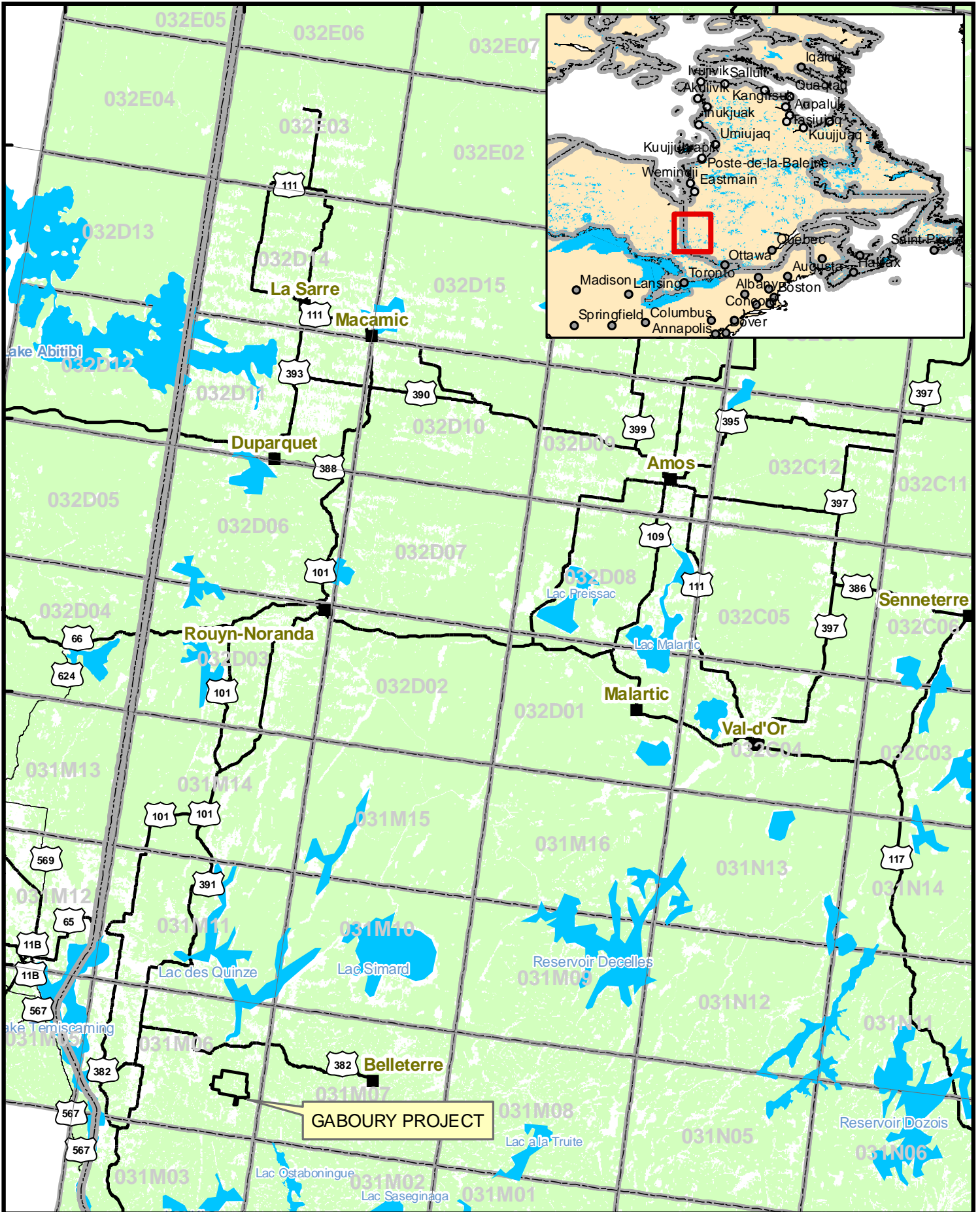
77°30'W

49°0'N

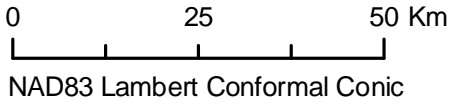
48°30'N

48°0'N

47°30'N



G:\GIS\Gaboury\PropertyAndClaims\ArcGIS\GabouryGenLocMap2.mxd



NAD83 Lambert Conformal Conic

GABOURY PROJECT GENERAL LOCATION MAP